



Introduction

This document shows how to turn an Ubuntu 20 Desktop O.S into a connection client in kiosk mode.

The change of this O.S to kiosk mode will allow a to show a web browser to access a service (virtual desktop or application) published in UDS Enterprise when the computer is turned on

The conversion process of this O.S to kiosk mode will be performed through a script developed and provided by the UDS Enterprise technical team.

The device must have internet access so that both the installation process of the O.S and the execution of the script are performed correctly.

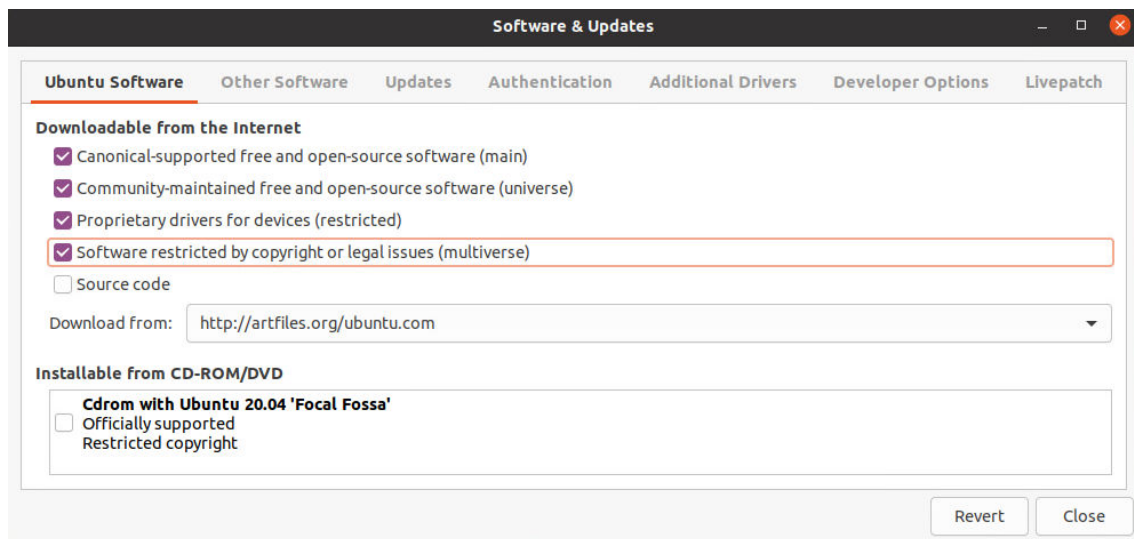


Connection client: Ubuntu 20 Desktop

On the (physical or virtual) computer that you are going to use as a connection client to connect to the UDS Enterprise services (virtual desktops or applications) you must have the Ubuntu 20 Desktop O.S installed.

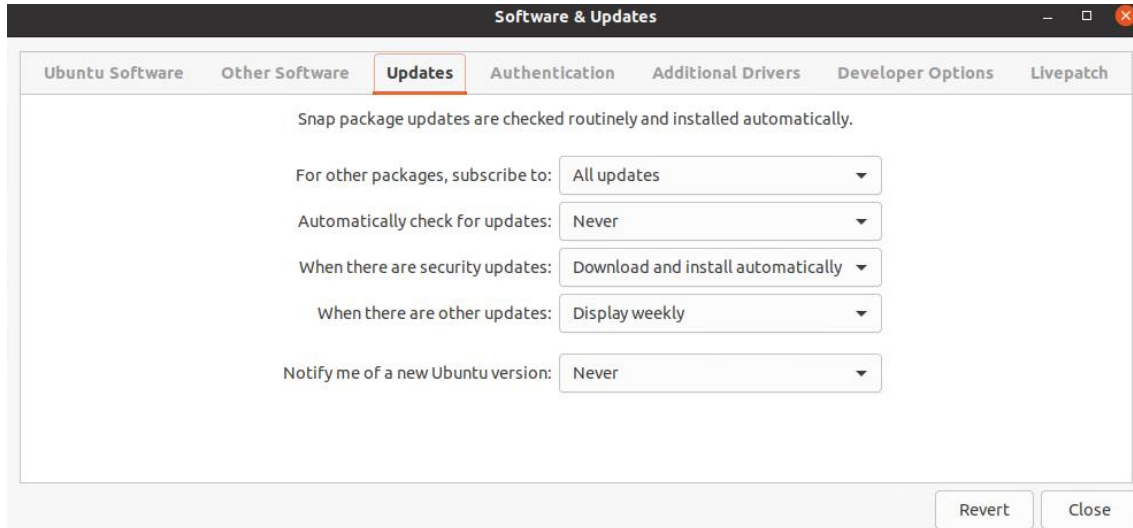
Perform a standard installation of this O.S and, once finished, check the source repositories and the configuration of the updates:

- **Repositories:** It is important to use a repository that is up to date and in sync with the main repository. To avoid problems with broken dependencies, it is recommended to use the Germany repository:





- **Updates:** It is recommended to disable automatic updates as shown in the following screenshot:



Once the Ubuntu 20 Desktop O.S is installed, proceed to download the conversion script to kiosk mode and execute it.



Conversion script Execution

The script for converting an Ubuntu 20 Desktop O.S to kiosk mode can be downloaded from the following [repository](#).

Index of /files/Kiosk_mode/Ubuntu20_Desktop

Name	Last modified	Size	Description
Parent Directory	-	-	-
Convertir Ubuntu20 Desktop a modo quiosco.pdf	2019-03-29 11:59	623K	
kiosk.sh	2020-08-21 13:20	2.1K	

Apache/2.4.25 (Debian) Server at images.udsenderprise.com Port 443

You can edit the script to indicate a specific home page. In this way, the user will only have to enter their access credentials to the UDS Enterprise portal and from there they will be able to access their virtual desktops and applications.

This home page will have to be the IP address or the name of the UDS server (broker).

```
GNU nano 4.8 kiosk.sh
#
#xfce-mcs-manager &
/usr/bin/firefox "https://demo.udsenderprise.com" &
EOF

mv /etc/gdm3/custom.conf /etc/gdm3/custom-old.conf
cat > /etc/gdm3/custom.conf <<EOF
[daemon]
#WaylandEnable=false

# Enabling automatic login
```

NOTE: Once the script has been executed, it will also be possible to configure the home page directly from the browser itself.



Once the script has been downloaded and adapted to our needs, execute it:

```
sudo bash Kiosk.sh
```

```
vc@vc-virtual-machine:~$ cd Downloads/
vc@vc-virtual-machine:~/Downloads$ ls -la
total 12
drwxr-xr-x  2 vc vc 4096 may 13 10:10 .
drwxr-xr-x 16 vc vc 4096 may 13 10:00 ..
-rw-rw-r--  1 vc vc 2179 may 13 10:10 kiosk.sh
vc@vc-virtual-machine:~/Downloads$ sudo bash kiosk.sh
```

The script, in addition to configuring the Ubuntu O.S in kiosk mode, will also install the latest available version of the **UDS Client** (UDS Plugin 3.0) and the Client for RDP connections: **FreeRDP version2**.

```
udscclient3_3.0.0_all.deb 100%[=====>] 56,5
9K --.-KB/s in 0,004s
2021-05-13 16:47:29 (14,4 MB/s) - 'udscclient3_3.0.0_all.deb' saved [57944/57944]
Reading package lists... Done
```

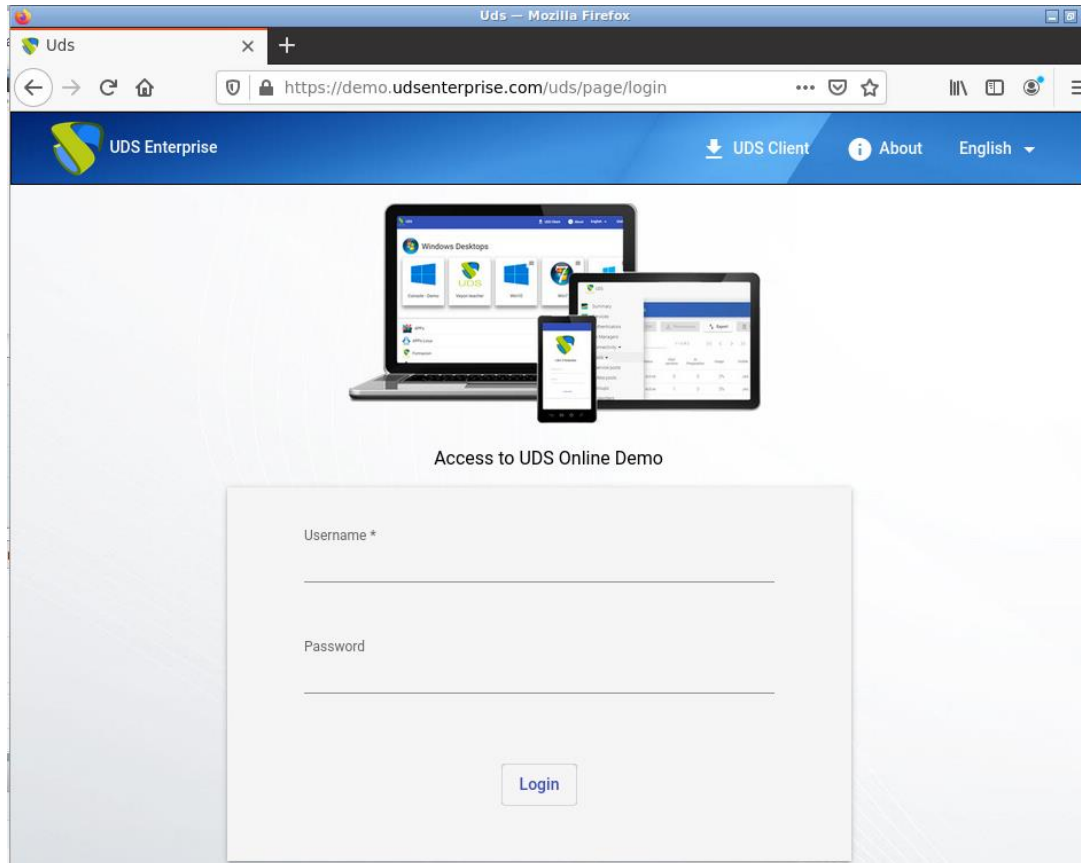
Once the process is finished, you will have the O.S configured in kiosk mode and all the UDS Enterprise components necessary to connect to desktop services and virtual applications.

As a last task, you must restart the computer, so that the configuration made is applied.



Access Ubuntu in kiosk mode

After executing the script and restarting the machine, you will see that the system automatically authenticates us and shows us a browser window with the home page indicated in the script.



NOTE: If no home page has been indicated in the script, the one that the browser shows by default will appear, being able to configure a specific one within the browser's configuration options.

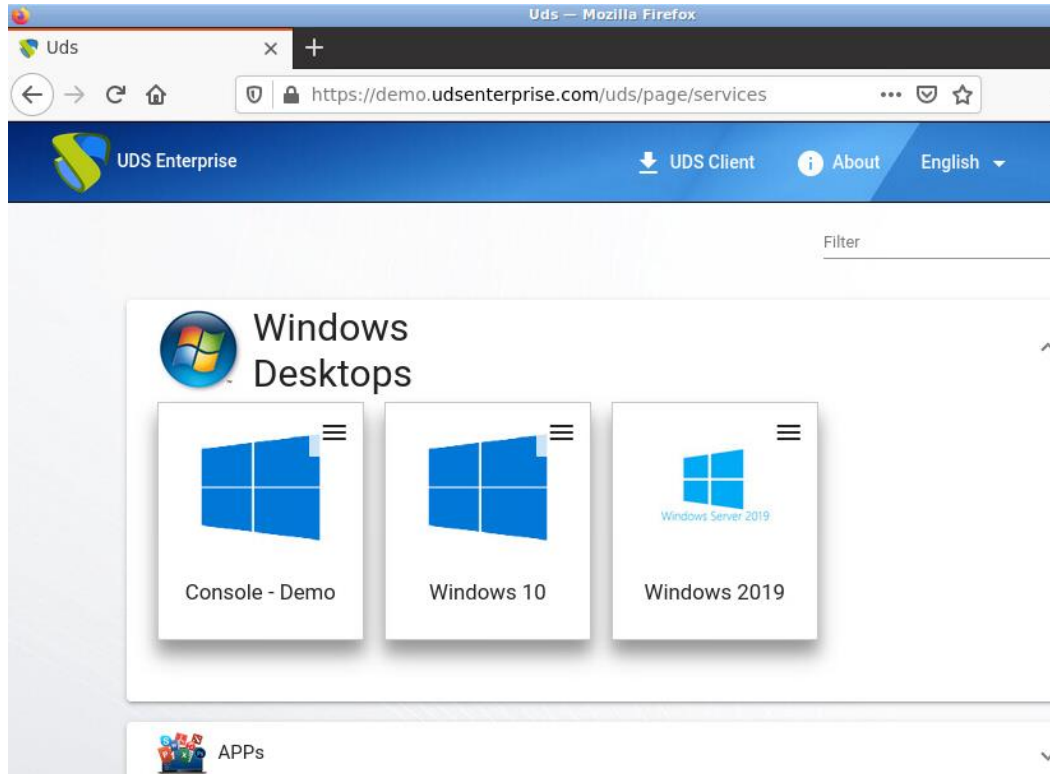


UDS Enterprise

Turning Ubuntu 20 Desktop to kiosk mode

www.udsenderprise.com

The user must validate with their login credentials in the UDS Enterprise portal and from there the services will already be accessible to the users.



If a user closes or minimizes the browser, it can be recovered again by right-clicking on the desktop and selecting **"Web browser"**.



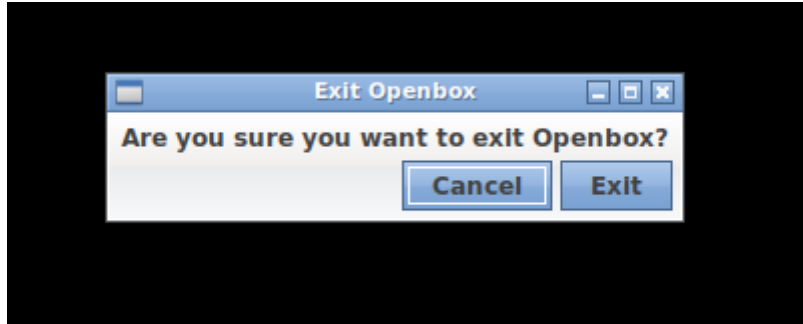


UDS Enterprise

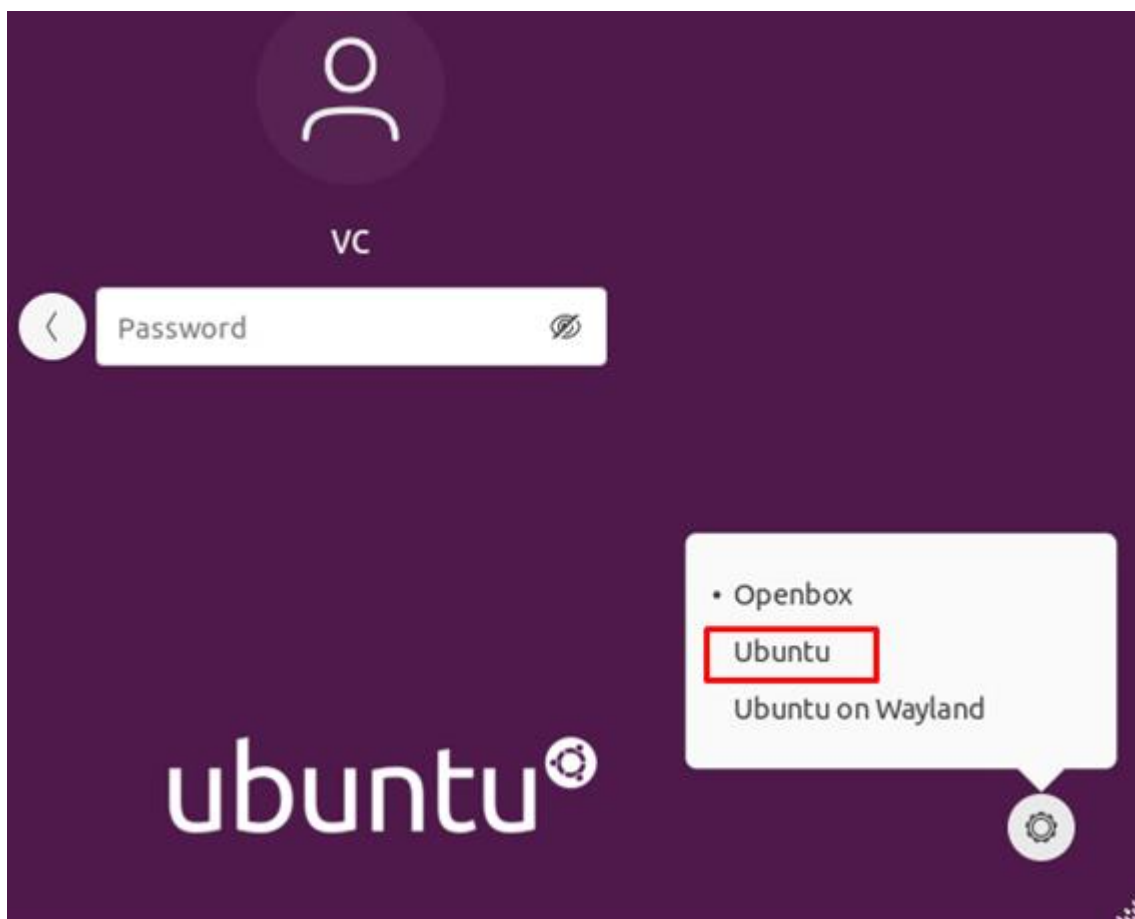
Turning Ubuntu 20 Desktop to kiosk mode

www.udsenderprise.com

If access to the standard Ubuntu O.S is needed, you can do so by closing the browser, right-clicking on the desktop and selecting **"Exit"**.



The system will ask you if you want to exit the Openbox session and you will see that now it allows you to access Ubuntu 20 in a normal way (with the Gnome window manager, by default in Ubuntu 20).





UDS Enterprise

Turning Ubuntu 20 Desktop to kiosk mode

www.udsenderprise.com

About Virtual Cable

Virtual Cable develops and markets UDS Enterprise through a subscription model including support and updates, depending on the number of users.

In addition, Virtual Cable offers professional services to install and configure UDS Enterprise.

For more information visit www.udsenderprise.com or email us at info@udsenderprise.com.