



Importing UDS on Citrix Hypervisor and XCP-ng



#SmartDigitalWorkplace

VIRTUAL CABLE

Index

| | |
|---|---|
| INTRODUCTION | 2 |
| Download UDS Appliances | 2 |
| Import UDS Appliances on the virtual platform..... | 3 |
| Start UDS servers..... | 7 |
| THE SMART DIGITAL WORKPLACE SOLUTION BY VIRTUAL CABLE | 8 |
| About UDS Enterprise..... | 8 |
| About Virtual Cable | 8 |

INTRODUCTION

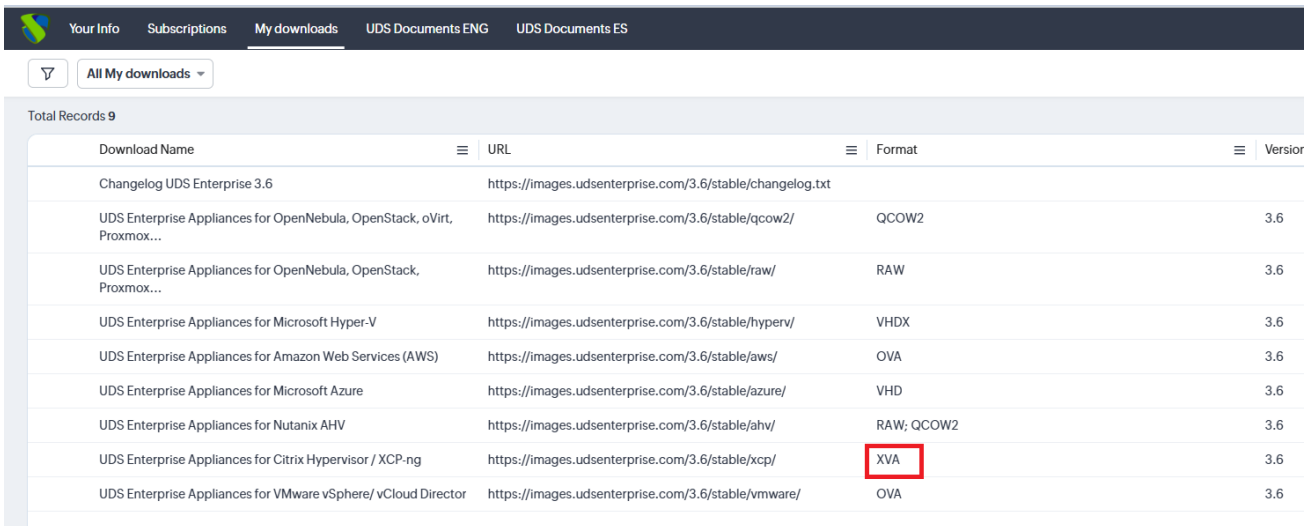
UDS Enterprise components are provided as Virtual Appliances. To upload these items on the Citrix Hypervisor platform, perform the following tasks:

Download UDS Appliances

Access your account at:

<https://myuds.udsenterprise.com/portal/MyUDSEnterprise/crm/login.sas>

Once inside, in the "My Downloads" section, select "UDS Enterprise Appliances compatible with Citrix Hypervisor / XCP-ng/" (.XVA format):



| Download Name | URL | Format | Version |
|--|---|------------|---------|
| Changelog UDS Enterprise 3.6 | https://images.udsenterprise.com/3.6/stable/changelog.txt | | |
| UDS Enterprise Appliances for OpenNebula, OpenStack, oVirt, Proxmox... | https://images.udsenterprise.com/3.6/stable/qcow2/ | QCOW2 | 3.6 |
| UDS Enterprise Appliances for OpenNebula, OpenStack, Proxmox... | https://images.udsenterprise.com/3.6/stable/raw/ | RAW | 3.6 |
| UDS Enterprise Appliances for Microsoft Hyper-V | https://images.udsenterprise.com/3.6/stable/hyperv/ | VHDX | 3.6 |
| UDS Enterprise Appliances for Amazon Web Services (AWS) | https://images.udsenterprise.com/3.6/stable/aws/ | OVA | 3.6 |
| UDS Enterprise Appliances for Microsoft Azure | https://images.udsenterprise.com/3.6/stable/azure/ | VHD | 3.6 |
| UDS Enterprise Appliances for Nutanix AHV | https://images.udsenterprise.com/3.6/stable/ahv/ | RAW; QCOW2 | 3.6 |
| UDS Enterprise Appliances for Citrix Hypervisor / XCP-ng | https://images.udsenterprise.com/3.6/stable/xcp/ | XVA | 3.6 |
| UDS Enterprise Appliances for VMware vSphere/ vCloud Director | https://images.udsenterprise.com/3.6/stable/vmware/ | OVA | 3.6 |

It will take you to a download repository where you will find the UDS Appliances:

UDS Enterprise 4.0 RC Images

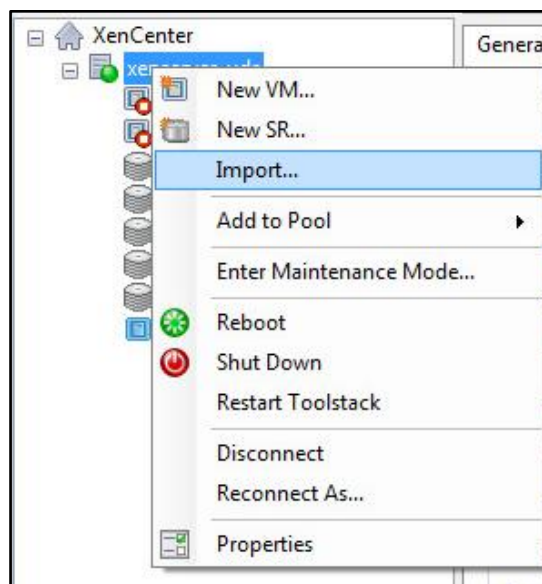
Please, select the option that best fit your needs

- [VMWare Images](#)
- [XCP-ng/XenServer Images](#)
- [Nutanix AHV Images](#)
- [Azure Images](#)
- [AWS Images](#)
- [Cloud Images](#)
- [Hyper-V](#)
- [RAW Images \(For OpenStack, OpenNebula, ProxMox, ...\)](#)
- [QCOW2 Images \(For OpenStack, OpenNebula, ProxMox, oVirt>=4.2, ...\)](#)

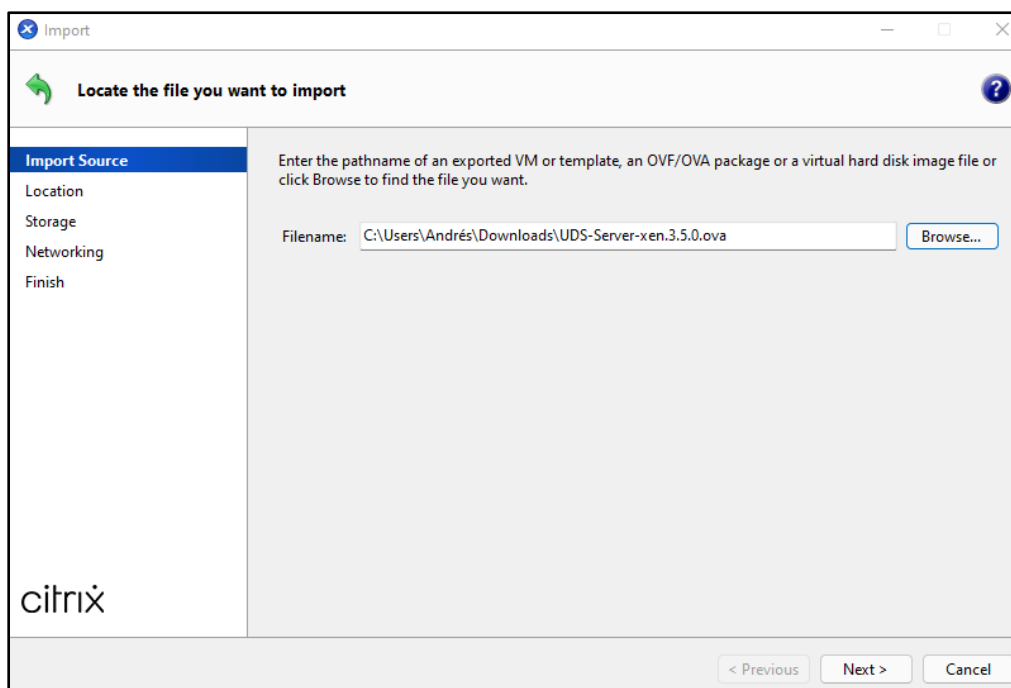
Import UDS Appliances on the virtual platform

Download the UDS Appliances. See below an example with the UDS Server Appliance (**UDS-Server-XXxva**).

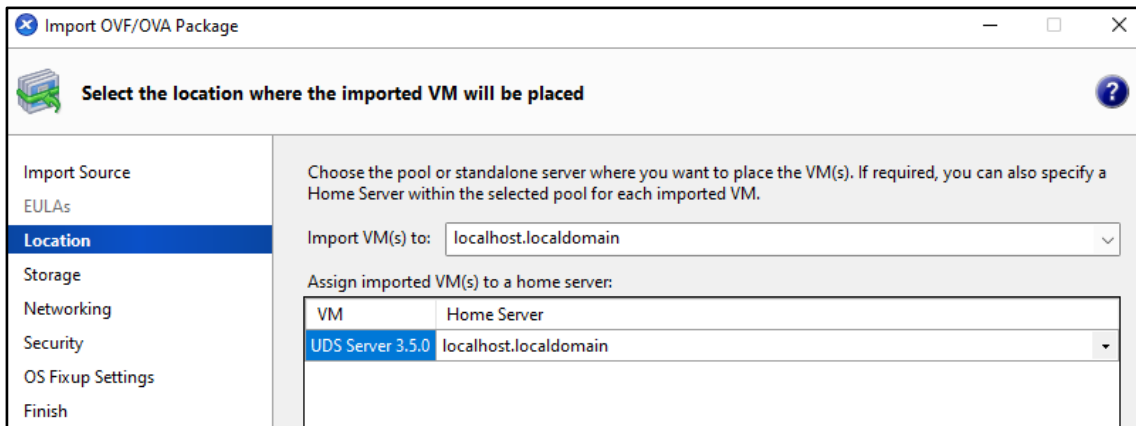
Access the Citrix Hypervisor environment and select the **"Import"** option:



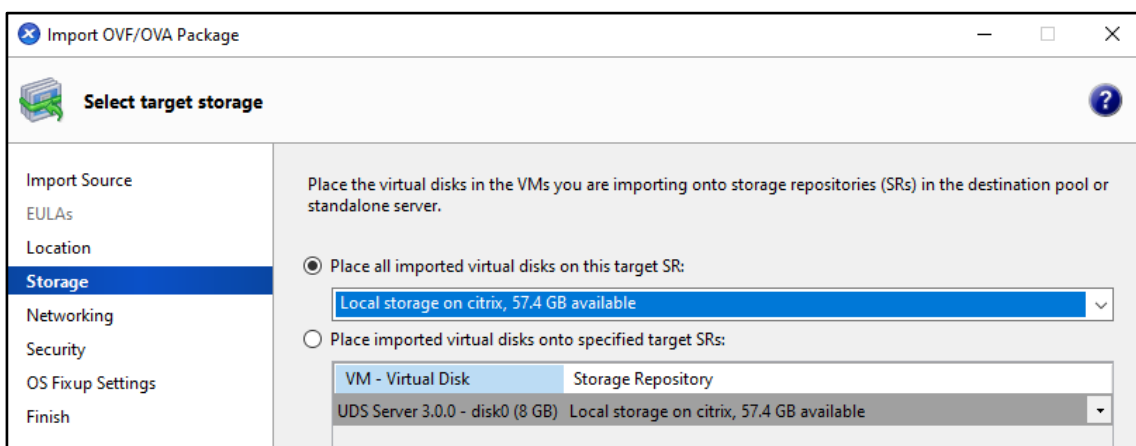
Search and select the previously downloaded UDS Appliance.



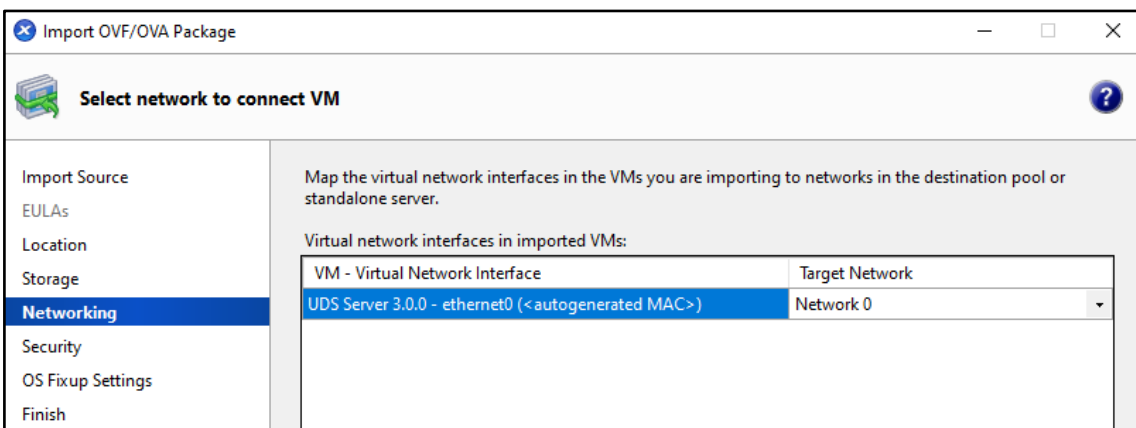
Indicate where to host the server.



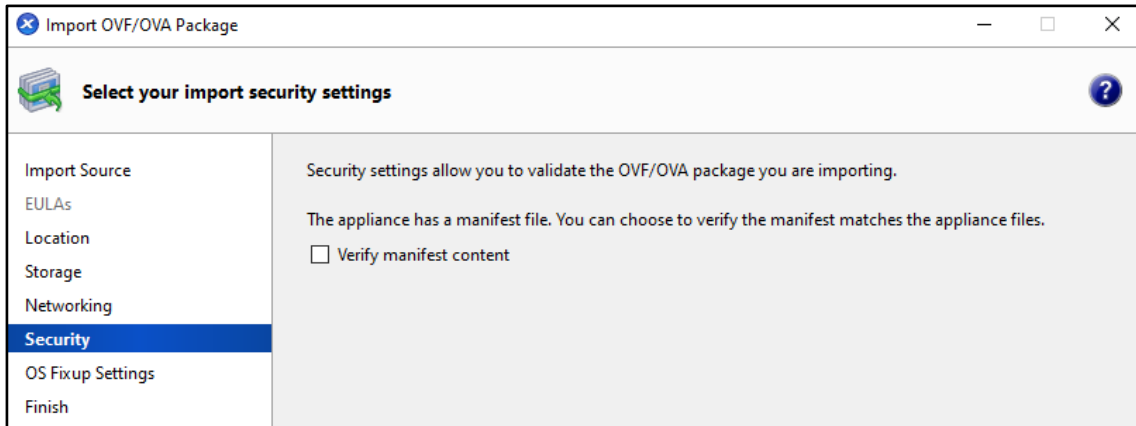
Select the storage.



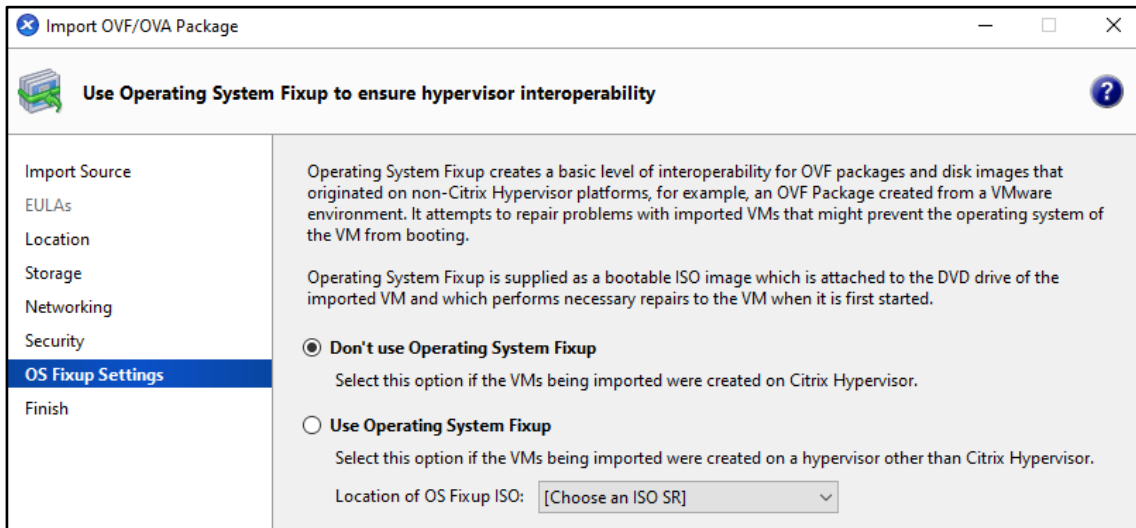
Assign a network.



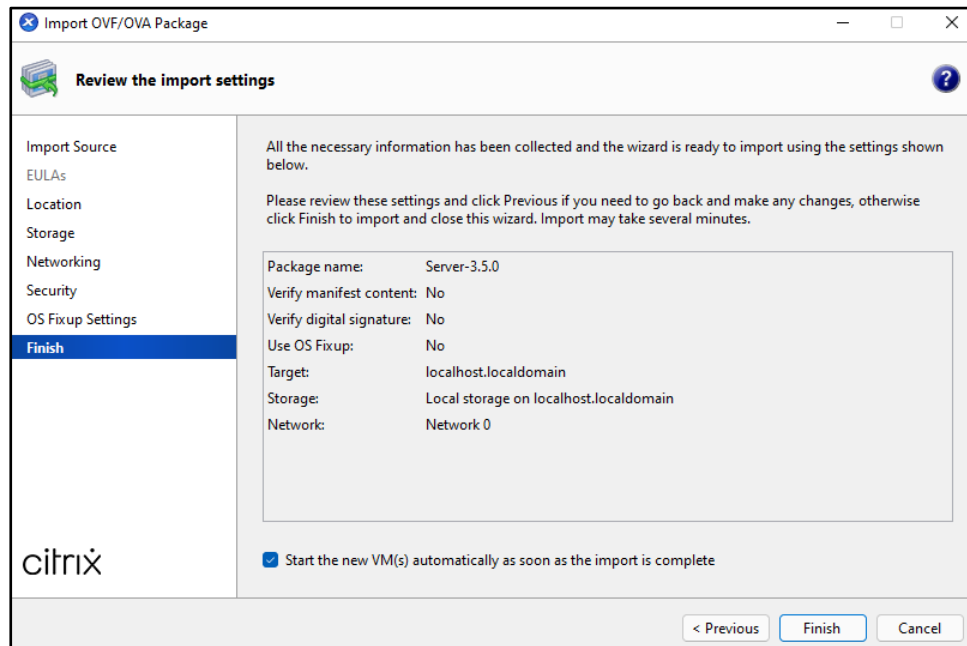
The "Security" section is left by default.



Mark "Don't use Operating System Fixup".



Verify all the data in the configuration summary and finish the wizard to start the import process.



Start UDS servers

Once the import of the UDS Appliance is finished, turn on the VM and start a console to begin with the server configuration.

```

UDS Enterprise Server v4.0.0 broker-400 tty1

broker-400 login: root (automatic login)

Linux broker-400 6.1.0-31-amd64 #1 SMP PREEMPT_DYNAMIC Debian 6.1.128-1 (2025-02-07) x86_64
UDS Enterprise Server v4.0.0

      (((((/,,,,,,,,,,,,,,
      ((((((((((/,////////((((((((*,
      /(((((((((((((((((((((((((((((((/,
      /(((((((((((((((((((((((((((((((/,
      ,*(((((((((((((((((((((((((((((/,
      ,/(((((((((((((((((((((((((((*,
      ###*,/((((((((((((
      ,#####/,/((((((((((((
      ,/#####(*,((((((((((((
      ,/#####/,*/((((((((((((
      *#####(*,((((((((((((
      *#####/,*(((
      ,/#####/,*/(((
      ,*##*,*(
      ,
      ,

UDS Enterprise comes with ABSOLUTELY NO WARRANTY,
to the extent permitted by applicable law.
Last login: Fri Feb 14 18:16:03 CET 2025 on tty1
UDS Enterprise broker CLI tool
Your appliance is currently unconfigured.
In order to configure it, you need to go through the setup process.
Since UDS 3.0, the configuration is done using a web browser.
UDS Enterprise setup launcher
Your appliance IP is 192.168.14.85. We are going to start the web setup process for you right now.
To configure your appliance, please go to this URL: https://192.168.14.85:9900
Note that, by default, UDS Appliance generates self signed certificates.
If you want to use your own certificates, please copy them to /etc/certs/ folder.
The setup process will be available until finished or the appliance is rebooted.
Your setup code is: Yj9jp4XA

YJ9JP4XA
  
```

Click on **"Start"** and select the **"Console"** tab in the menu. Wait for the VM to start and proceed with the configuration of the UDS Appliance (see [Installation, Administration and User Manual of UDS Enterprise](#)).

NOTES:

1. If you want to use the UDS Tunnel component (which will provide you with WAN access and HTML5 access to the different services) repeat the same tasks previously described using the UDS-Tunnel.xxova file.
2. If you do not have your own database server to host the UDS Enterprise database, from the same repository you can download a virtual machine with a database server already prepared for this purpose. We remind you that this server is not part of UDS Enterprise, and therefore it is not supported.

THE SMART DIGITAL WORKPLACE SOLUTION BY VIRTUAL CABLE

About UDS Enterprise

[UDS Enterprise](#) is a new software concept for creating a **fully customized workplace virtualization** platform. It provides **secure 24x7 access** from **any location and device** to all applications and software of an organization or educational center.

It allows you to combine Windows and Linux **desktop and application virtualization** in a single console, as well **as remote access** to Windows, Linux and macOS computers. Its Open Source base guarantees **compatibility with any third-party technology**. It can be deployed on-premises, in a public, private, hybrid or **multicloud**. You can even combine several environments at the same time and perform automatic and **intelligent overflows** to optimize performance and efficiency. All with a **single subscription**.

About Virtual Cable

[Virtual Cable](#) is a company specialized in the digital **transformation of the workplace**. The company develops, supports and markets UDS Enterprise. It has recently been recognized as an **IDC Innovator in Virtual Client Computing** worldwide. Its team of experts has designed **smart digital workplace solutions (VDI, vApp and remote access to physical computers)** tailored to each sector to provide a unique user experience fully adapted to the needs of each user profile. Virtual Cable professionals have **more than 30 years** of experience in IT and software development and more than 15 years in virtualization technologies. **Everyday millions of Windows and Linux virtual desktops** are deployed with UDS Enterprise around the world.